

Please check that this question paper contains 13 Questions and has 07 Printed pages.

Roll No. _____

D.A.V. INSTITUTIONS, CHHATTISGARH

SAMPLE QUESTION PAPER : 8

CLASS XII

SUBJECT-ENGLISH CORE

Time Allowed: 3 Hours

Maximum Marks: 80

SECTION A: READING SKILLS (22 Marks)

1. Read the following text.

12

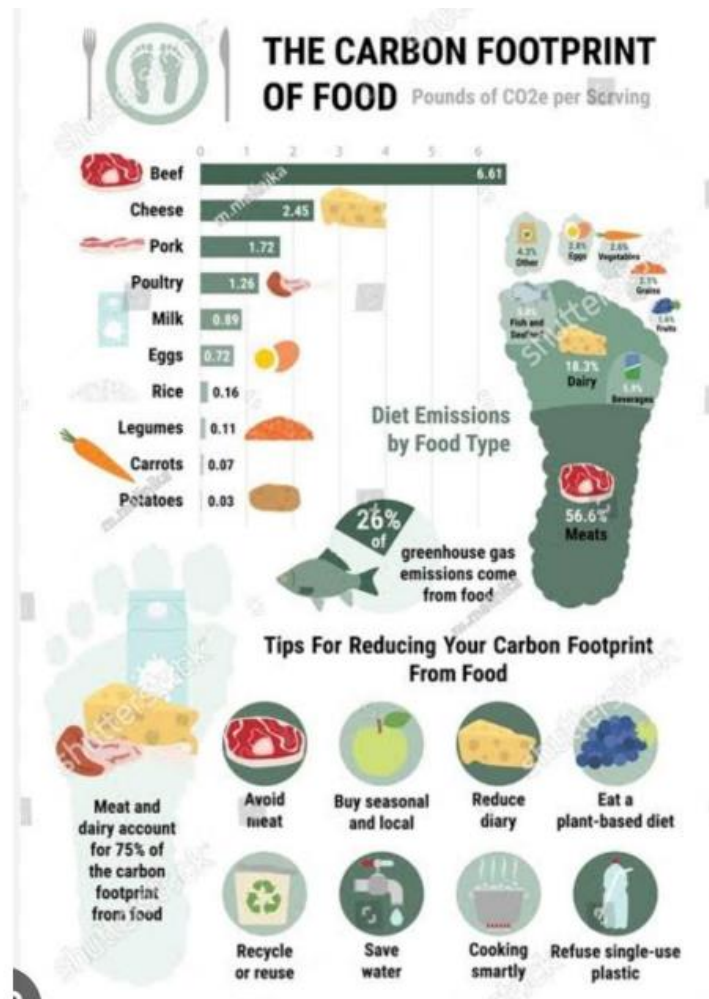
1. Given the standing of some of its institutions of higher learning, the IITs and IIMs ,India is a potential knowledge power . Realising the potential however, is not going to be easy. The impressive strides made by a Sarva Siksha Abhiyan (SSA) not with standing, universal access to quality school education – a minimum necessary condition for any progress towards making India a knowledge society’ as the 2006 report of the National Knowledge Commission (NKC) puts it remains a distant goal.
2. There is as yet no legislation at the national level to affirm the right to education, a fundamental right under the constitution. The number of school buildings for elementary and secondary education falls far short of requirements and so does the number of qualified teachers. The pressure on government budgets, which forces governments to hire teachers on contract paying a pittance of a salary, is playing havoc with quality. While the incursion of the private sector in field is providing some competition, mechanisms to enforce the required standards are lacking.
3. Not that there are no national standards or standards –enforcing agencies. We have the National Council for Educational Research and Training (NCERT) to bring out textbooks in various subjects for school education. The Central Board of Secondary Education (CBSE) conducts examinations for schools affiliated to it across the county .The states too have their school boards to conduct exams and enforce minimum standards. How even the standards vary widely. In their anxiety to show spectacular performance. Some states are overly lenient-in marking answer papers.
4. Questions arise even over the standards applied by CBSE. Going by the number of students securing 90% or more in their higher secondary exam, it would appear in India is on the brink of a knowledge revolution. The numbers are so large that the cut –off point for admission to top colleges is now above 90%. However, the admission to IITs and medical colleges are not based only on CBSE, or State Board Exam results .Leading undergraduate colleges offering non- professional degree courses hold their own admission tests. Obviously, Higher Secondary School results are not taken to be a reliable index of the quality of a student’s learning capability or potential.
5. The numbers seem to be growing every year. The standards applied by Higher Secondary Boards like CBSE seem to have been diluted to the point that leaves a big gap between what students learn at school and what they have to face on entering institutions of higher learning.
6. In an attempt to remedy the situation, NCERT had recently commissioned experts to rewrite textbooks on economics. Though not entirely free from blemishes, these new texts should go some way in helping beginners get acquainted with the basic concepts in the subject and their applications.
7. Not surprisingly their introduction is facing roadblocks .Teachers do not like to be compelled to look at textbooks they are not familiar with. Those who revel in seeing students score 90% are reluctant of ushering in something that may stop the rush of such scores.

Answer the following questions, based on the passage above.

1

- i) Complete the sentence by choosing an appropriate option.
Governments have to hire teachers on contract basis due to
- a) The non-availability of regular teachers
- b) Abundance of teachers in an area
- c) The guidelines issued by the Central Government

- d) The pressure on government budgets
- ii) What is the tone of the writer when he remarks “India is on the brink of knowledge revolution?” 1
 a) Sarcastic b) optimistic c) imaginative d) presumptuous
- iii) List the reason as why India is referred as a potential knowledge power. 1
- iv) Complete the given sentence with an appropriate inference with respect to the following. 1
 The main factor that has affected the quality of education is
- v) Select the option that conveys the opposite of ‘plenty’ from words used in paragraph 2. 1
 a) incursion b) mechanisms c) looking d) pittance
- vi) Why do leading undergraduate colleges hold their own admission tests? 2
- vii) Why do you think that teachers are opposing the introduction of new textbooks? 2
- viii) The writer would not agree with the following statements based on paragraph 4 EXCEPT 1
 a) A large number of students score more than 90% in their higher secondary school exams.
 b) The cut-off point for admission to top colleges is above 85%.
 c) Admission to IITs are based only on CBSE or State Board results.
 d) Higher secondary school exam results are taken to be a reliable index of the quality of a student’s learning capabilities.
- ix) State the feelings of the writer with reference to the topic concerned in the passage. 2
2. Read the passage given below and answer the questions that follow: 10
- The world emits roughly 3 gigatonns of greenhouse gases annually during food transportation from production to consumption sites, according to a new study published in Nature Food. Eating ‘exotic foods? You’re helping in emission of 3 gigatonnes of greenhouse gases yearly. This represents 19 per cent of the total food-related emissions, covering food production, land-use change and transportation, the findings suggested.
 - The study’s estimate is seven times higher than the previous ones. Earlier studies only considered the direct transport of particular foods (animal products), leaving out associated products (like soybean to feed the animals), said David Raubenheimer, Nutritional ecologist and co-author of the study.
 - The top emitters are China, the United States, India and Russia. Together, they are responsible for 64 per cent of global emissions from domestic food transport, according to the findings. Researchers from the University of Sydney estimated the carbon footprint of food transport in 74 countries or regions in the study. They calculated emissions using a model called MRIO (MultiRegional Input-Output Modelling), which integrates information on physical transportation, distance, mass, and emissions into global supply chains. “Our calculations are dependent not only on the countries and sectors of origin but also on the country of destination, featuring about 30 million trade connections,” said Mengyu Li from the University of Sydney and the lead author of the study.
 - According to the analysis, the US, China, Japan, Germany, the United Kingdom, India, Russia and Brazil collectively account for 42 per cent of food transport emissions. High-income countries are the major contributors. Countries such as the United States, Germany, France and Japan constitute 12.5 per cent of the world’s population yet generate 46 per cent of food transport emissions, the report stated.
 - Contributions from India, Brazil, Australia and Argentina are tied to exports. Access to improved technology and expanding food trade has helped these nations rapidly scale up food production in recent decades, the study suggested. Still, low-income countries, according to the analysis, cause only 20 per cent of emissions despite supporting about half of the global population.
 - The world could reduce emissions by 0.38 gigatonnes by replacing imports and exports with locally grown food. “Prior to our study, most of the attention in sustainable food research has been on the high emissions associated with animal-derived foods, compared with plants,” Raubenheimer said in a statement. Eating locally is ideal, especially in affluent countries, he added.



- Do food related emissions include emissions during production? 1
 - Yes
 - No
 - Sometimes
 - Not clear from the passage
- How is the new study published in Nature Food different from earlier ones? 2
- Which countries are responsible for more than half of global emissions from domestic food transport? 1
 - United States, China and United Kingdom
 - China, United States, Russia and India
 - India, Germany, United States and China
 - China, Russia and France
- High income seems to be directly proportionate to the amount of food transport emissions. 1
 - True
 - False
 - Depends on the year
 - Not clear from the passage
- What has helped countries like India and Brazil scale up food production in recent years? 1
- A simple and practical way to reduce emissions by 0.38 gigatonnes is _____ 1
- Are food transport emissions directly proportional to the population of a country? Give an instance from the passage in support of your answer. 2
- According to the info graph given above, which food group is the biggest contributor to carbon emissions? 1
 - Plant based
 - Animal based
 - Dairy
 - Cannot be determined

SECTION B CREATIVE WRITING SKILLS

3. Attempt ANY ONE of two in about 50 words. 4
- A. Water supply will be suspended for eight hours for cleaning of the water tank. Write a notice advising the residents to store water for a day . You are Karan/Kiran ,Secretary ,Janata Group Housing Society, Palam Vihar ,Kurnool.
- OR
- B. You are the Health Secretary of the Student’s Council of your school . Draft a notice for the school notice board informing the students of class XII to enroll for a week –long cleanliness drive organized by your school .
4. Attempt ANY ONE of two in about 50 words . 4
- A. You are Dhruv/Deepa . Your father Shri Dheeraj Garg of Gurgaon wants you to draft an invitation to be sent to friends and relatives on the occasion of your elder sister’s marriage. Prepare the invitation giving necessary details.
- OR
- B. You are Ranjit/Rani Chopra ,a celebrated short story writer . You have been invited by the Literary Club, Sunshine Public School, Karnal to deliver a lecture on ‘Literature and Life’. Draft an acceptance of the invitation.
5. Attempt ANY ONE of two, in about 120-150 words. 5
- A. You are Rita/Rajesh from 29-D Shanti Park, Bengaluru. You have read the following advertisement in The Times of India for the post of Assistant Librarian given by St. Darwin Convent Library, Bengaluru. Write an application to apply for the post along with your bio-data separately. St,Darwin Convent Library ,Bengaluru ,invites applications from well qualified and experienced person for the post of Assistant Librarian .
- Eligibility Criteria
- . A Master degree in Library Science with at least 55% marks.
 - . Minimum 2 yrs. of work experience in a leading Academic Institution.
 - . Language proficiency in Hindi and English.
- OR
- B. Write a letter to the Editor of a newspaper drawing attention of the authorities to the rash driving and over charging habits of auto rickshaw drivers. Use the following clues and invent the necessary details.
- CLUES
- . Indispensable part of transport
 - . Run helter-skelter
 - . Charge different price for the same journey
 - . Misbehave with passengers.
6. Attempt ANY ONE of two ,in about 120-150 words. 5
- A. The sports field is said to be a minifield of life . Whatever we experience or learn here serves as an invaluable experience to us for life . Write an article on ‘More Lessons are Learnt in the Sports field than in the Classroom’. You can use the following clues.
- CLUES
- . Cooperation, teamwork ,leadership
 - . Tolerance and understanding
 - . No caste and religious prejudice
 - . Healthy life
- OR
- B. Your school recently conducted an Inter-School Heritage Quiz Contest . As a student reporter write a parent of the event to be published in your school magazine . You are Archit/Archana
- Know your Heritage
An Inter-School Quiz Contest
- . History . Mythology . Culture . Monuments . Handicraft .

SECTION C: LITERATURE TEXT BOOK AND SUPPLEMENTARY READING TEXT (40)

7. Read the following extract and answer the questions that follow. Attempt any ONE. 1x6=6

A. Aunt Jennifer's tigers prance across the screen,
Bright topaz denizens of a world of green,
They do not fear the men beneath the tree:
They pace in sleek chivalric certainty.
Aunt Jennifer's fingers fluttered through her wool,
Find even the ivory needle hard to pull.
The massive weight of the uncle's wedding band
Sits heavily upon Aunt Jennifer's hand.

- i) Denizens of the world of green refer to
 - a) Huntsmen
 - b) Aunt Jennifer
 - c) uncle
 - d) tigers
- ii) Choose the option that displays the same poetic device as used in the second line of the extract.
 - a) Heart of stone
 - b) trees sprouting
 - c) silver spoon
 - d) white murder
- iii) The man sitting beneath the tree is
- iv) What quality of the uncle can be inferred through these lines ?
 - a) Compassionate nature
 - b) courageous
 - c) confident
 - d) dominating
- v) The tigers in extract are symbolic of
 - a) Creative and courage
 - b) confidence and gentleness
 - c) cruelty and fear
 - d) aggression and starving
- vi) Aunt Jennifer's tigers prance across

1. The screen 2. The fields 3. The embroidered tunic 4. The cage
a) 1 and 2 b) 2 and 4 c) 1,2 and 3 d) 1 and 3
OR

B.but after the airport's
Security check, standing a few yards
Away, I looked again at her, wan pale
As late winter's moon "

- i) Choose the option that displays the same poetic device as used in the last line of the above extract.
 - a) As white as snow
 - b) the lanky lad troubled all
 - c) Life is full of ups and downs
 - d) Nature is god's gift to us
- ii) State whether the given statement is TRUE or FALSE with reference to the extract.
When the poet looks at her mother again and again ,she is trying to be hopeful.
- iii) Complete the sentence appropriately.
The poet looked at her mother again and again in order to
- iv) The line 'I looked at her ,wan and pale as a late winter's moon indicates that.....
- v) The figure of speech used in the lines 'the young trees sprinting is
- vi) What were the reasons for mother 's pale face?
 - a) Her old age
 - b) her depleting energy
 - c) Her illness
 - d) both (a) & (b)

8. Read the given extracts and answer the questions for ANY ONE of the two given. 1x4=4

A. MR LAMB: Real one got blown off, years back. Lamey –Lameb, some kids say. Haven't you heard them? You will. Lamey-Lamb. It fits Doesn't trouble me.

DERRY: But you can put on trousers and cover it up and no one sees, they don't have to notice and stare.

MR LAMB: Some do .Some don't. They get tired of it, in the end. There's plenty of other things to stare at.

DERRY: Like my face.

- i) Complete the sentence appropriately with reference to the extract.
Real one in the extract refers to
- ii) In the above extract, what does 'other things' not refer to?
- iii) Identify the textual clue that allows the reader to infer Mr Lamb's acceptance of kids calling 'Lamey-Lamb'.
- iv) Why did the children call Mr Lamb 'Lamey-Lamb'?
 - a) Because of his tin leg
 - b) Because he spoke rudely
 - c) Because they didn't like him.
 - d) Because he stopped them from taking apples.

OR

B. Will the West Antarctic ice melt entirely? Will the Gulf Stream ocean current be disrupted? Will it be the end of the world as we know it? May be. May be not. Either way, Antarctica is a crucial element in this debate –not just because it's the only place in the world, which has never sustained a human population and therefore remains relatively 'pristine' in that respect; but more importantly, because it holds in its ice-cores half million-year-old records trapped in its layers of ice.

- i) what does the phrase 'May be. May be not' in the extract indicate?
 - a) suspicion
 - b) foretelling
 - c) uncertainty
 - d) despair
- ii) find a word in the extract which is a synonym of 'perfect'.
- iii) Why does Antarctica hold importance?
- iv) The questions asked by the narrator signify

9. Read the given extracts and answer the questions for ANY ONE of the two given.

1x6=6

A. I went to the pool when no one else was there. The place was quiet. The water was still and tiled bottom was as white and clean as a bathtub. I was timid about going in alone, so I sat on the side of the pool to wait for others.

I had not been there long when in came a big bruiser of a boy, probably eighteen years old. He had thick hair on his chest. He was a beautiful physical specimen, with legs and arms that showed rippling muscles. He yelled. 'Hi, Skinny! How 'd you like to be ducked?'

- i) Select the option that completes the given sentence appropriately.
When the narrator went to the pool it was
- ii) Why did the narrator sit on the side of the pool?
 - a) To enjoy the beauty of the pool
 - b) He was afraid of entering the pool alone
 - c) To wait for the coach
 - d) To prepare himself mentally to enter
- iii) What is the purpose of the description of the bully? Present your views.
- iv) What did the big bruiser of a boy do?
- v) Identify the textual clue that allows the reader to infer that the big boy was a bully.
- vi) The word 'bruiser' in the extract means

OR

B. He was kneeling on the floor in the next room tinkering with a part of his motorcycle over some newspaper spread on the carpet. He was three years out of school, an apprentice mechanic, travelling to his work each day to the far side of the city. He was almost grown up now, and she suspected areas of his life about which she knew nothing, about which he never spoke. He said little at all, ever voluntarily. Words had to be prised out of him like stones out of the ground. And she was jealous of his silence. When he was not speaking it was as though he was away somewhere, out there in those places she had never been.

- a) Both Geoff and Sophie are closed and distant personalities. What differentiates them, according to you?

- b) 'He said little at all,ever,voluntarily. Words had to be prized out of him like stones out of the ground .' Choose the option that states the characteristics of the person being talked about in the above lines.
1. Rigid 2. Stubborn 3. Distant 4. Invincible 5. Reserved
- i) 1 and 4 ii) 2 and 5 iii) 2 and 3 iv) 3 and 5
- c) Explain any one possible inference that can be drawn from the facts : 'He was in his room tinkering with a part of his motorcycle and travelling to his work each day to the far side of the city .'
- d) Identify the line from the text that bears evidence of the use of simile by the author ?
- e) Based on the context provided in the extract ,select the most likely explanation for Sophie's jealousy of her brother's mysterious ways.
- i) Geoff's silence filled her with doubt.
- ii) His silence mystified her
- iii) Geoff's silence worried her.
- iv) She imagined that in his silence Geoff was in a world unknown to her.
- f) Correct the given sentence with ONE word.
Geoff ,like Sophie is caught between the world he lives in and the world he wants to live in.

10. Answer any five of the following six questions, in about 40-50 words. 2x5=10

- i) Why was Edla happy to see the gift left by the peddler? (The Rattrap)
- ii) List the places that Gandhi visited between his first meeting with Shukla and his arrived at Champaran (Indigo).
- iii) In spite of despair and disease pervading the lives of the slum children, they are not devoid of hope. How far do you agree? (Lost Spring)
- iv) Give an example of what now seems to be dead but later on becomes alive. (keeping quiet)
- v) How does the poet use the image of 'figures fluttering through the wool' to highlight Aunt Jennifer's victimisation? (Aunt Jennifer's Tigers)
- vi) How does poem My Mother at Sixty – Six bring out the irony of human relationships?

11. Attempt ANY TWO of the following three questions, in about 40-50 words. 2x2=4

- i) How did Charley often get lost on the Grand Central Station? (The Third Level)
- ii) What qualities of Mr. Lamb attracted Derry towards him? (On the Face of It)
- iii) How does the writer indicate that Dr. Sadao's father was a very traditional and conventional man? (The Enemy)

12. Answer ANY ONE of the following two question, in about 120-150 words. 5

A. The poet of My Mother at Sixty Six goes through the emotions felt at the thought of the loss of a dear one. Comment.

OR

B. Teachers always advise their students to dream big. Yet, the same teachers in your classroom find fault with Sophie when she dreams. What is wrong with Sophie's dreams?

13. Answer ANY ONE of the following two questions, in about 120-150 words. 5

A. It may take a long time for oppression to be resisted but the seeds of rebellion are sowed early in life .How did Zitkala-Sa face oppression as a child and how did she overcome it? (Memories of Childhood)

OR

B.Both Derry and Lamb are victims of physical impairment but much more painful for them is the feeling of loneliness. Comment. (On the face of it)

